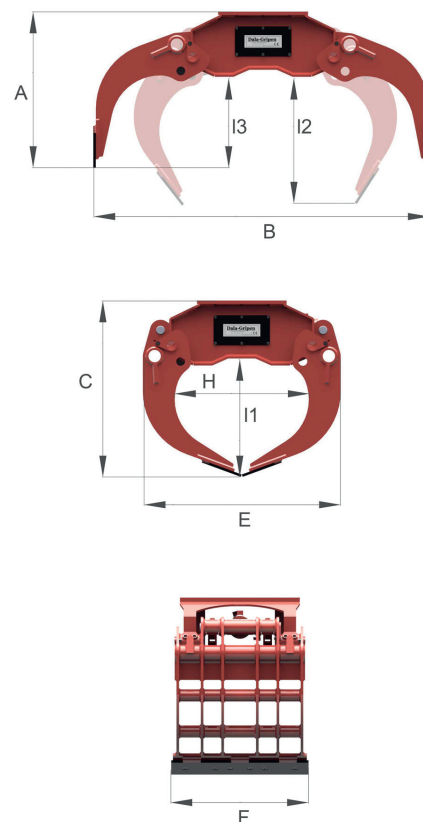


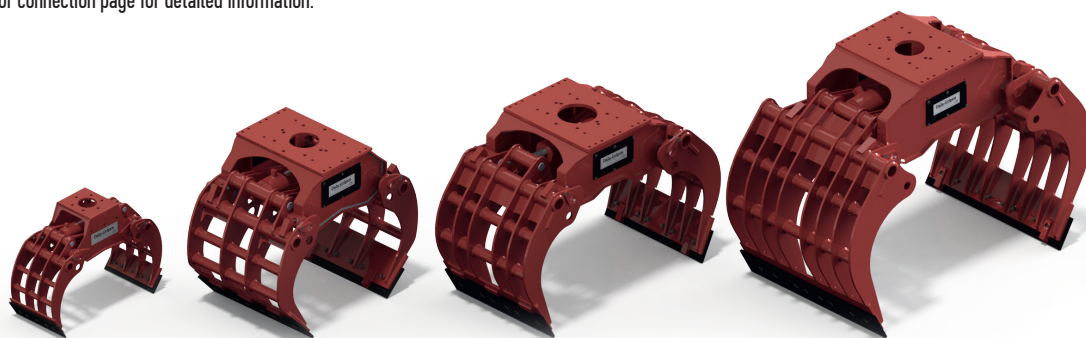
Powerful and durable, at the same time fast and flexible, universal for loading of stone, scrap and other waste.
Massive heavy duty claws with enhancement as well as Hardox450 material are insurance of durability.

- Grapples has additional fastener points where to attach any, specially adjusted coupling. Adapters should be fastened with screws - you can change and use it on different excavators and forest machinery. Can be attached with standard forest machinery rotator and work like free hanging grapple.
- 2 reaction links that contribute to symmetrical performance of grapple and spread the load on cylinder that in long run decreases the wear of grapple.
- Short cylinder working track provides fast movement of the grapple - opening/closing.
- Descending knives made of Hardox450, knives are double side useable, if one side is worn out, turn around and you will have new knives.
- DGS39/42 with security valve as standard.

MODEL			DGS12	DGS20	DGS25	DGS28	DGS35	DGS39	DGS42
A	HEIGHT WHEN OPEN	mm	430	470	530	625	730	925	1140
B	MAX OPENING	mm	835	1225	1440	1545	1765	1890	2355
C	HEIGHT WHEN CLOSED	mm	452	610	715	800	910	1040	1280
E	LENGTH WHEN CLOSED	mm	552	640	740	825	945	1125	1400
F	MAX WIDTH	mm	322	395	432	530	780	780	1080
H	GRIPPING AREA WIDTH	mm	375	390	470	530	610	762	955
I1	GRIPPING AREA HEIGHT	mm	237	335	410	460	555	660	825
I2	INSIDE HEIGHT OPENED 1 M	mm	-	325	430	500	635	755	950
I3	INSIDE HEIGHT MAX OPENED	mm	221	210	235	300	385	555	700
EXCAVATOR WEIGHT		ton	0,5-4,0	2,0-6,0	5,0-10,0	8,0-14,0	12,0-20,0	14,0-24,0	22,0-35,0
GRAPPLE WEIGHT		kg	62	113	175	275	455	650	1025
MAX LOAD		kg	1500	3000	3500	3500	5000	5000	5000
MAX WORKING PRESSURE		Bar	200	250	250	250	250	250	250
CYLINDER FORCE		kN	35	78	126	126	160	197	238
GRIPPING FORCE ARMS TIP		kN	7	11	18	18	20	25	30
OPENING TIME 70L/MIN		s	0,2	0,3	0,6	0,7	0,8	1	1,6
CLOSING TIME 70L/MIN		s	0,3	0,5	0,9	0,9	1,3	1,6	2,3
ROTATOR CONNECTION *			D	D	D	C	E	E	E
ORDER CODE			DGS12	DGS20	DGS25	DGS28	DGS35	DGS39	DGS42



* Please, see the rotator connection page for detailed information.



DGS12 / 20 / 25 / 28

DGS35

DGS39

DGS42