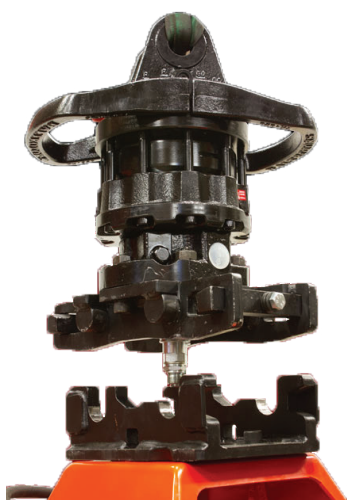


Quick connector is quick coupler to mount between rotator and different grapples or other tools.

Thank's to quick connector you can change grapple/tool just in a few minutes!

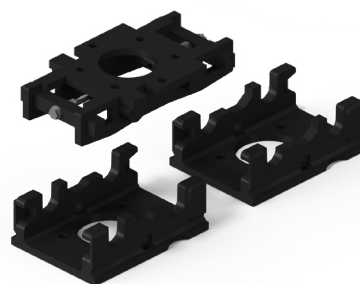
Only 2 screws to tighten and 2 quick couplings to push in with ONE special wrench!

SAVE TIME - WORK WITH QUICK CONNECTOR!



LIFTING CAPACITY 10T
WEIGHT 24 KG

MODEL		QC	
A	MAX WIDTH	mm	210
B	MAX LENGHT	mm	380
C	HEIGHT	mm	100
D	ROTATOR CONNECTION*	mm	C
E	GRAPPLE CONNECTION*	mm	C
FORESTRY MACHINE		FT/F/T	FT/F/T
WEIGHT		kg	24
MAX LOAD		kg	10000
ORDER CODE		QC	



FT - forest trailer/ F - forwarder/ T - truck

* Please, see the rotator connection page for detailed information.